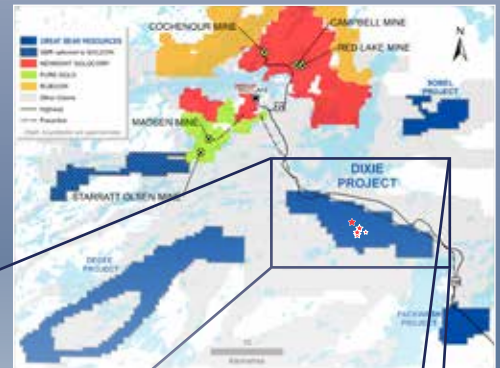


## HIGH-GRADE GOLD DISCOVERIES IN RED LAKE, ONTARIO

### INVESTMENT HIGHLIGHTS

- Gold exploration company located in one of the world's most prolific gold producing regions
- Focused on the 100% owned Dixie project
- Large high-grade gold system covering 23km
- Continuous exploration of the 5 known gold zones
- Fully funded to drill 90,000m through to 2020
- Geological team has over 100 years of collective experience in local mining and exploration

### RED LAKE PROPERTIES



### AURO ZONE-AZ

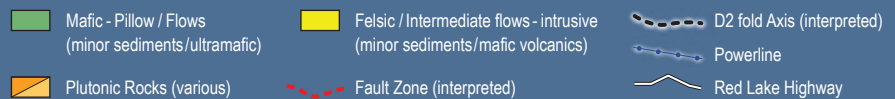
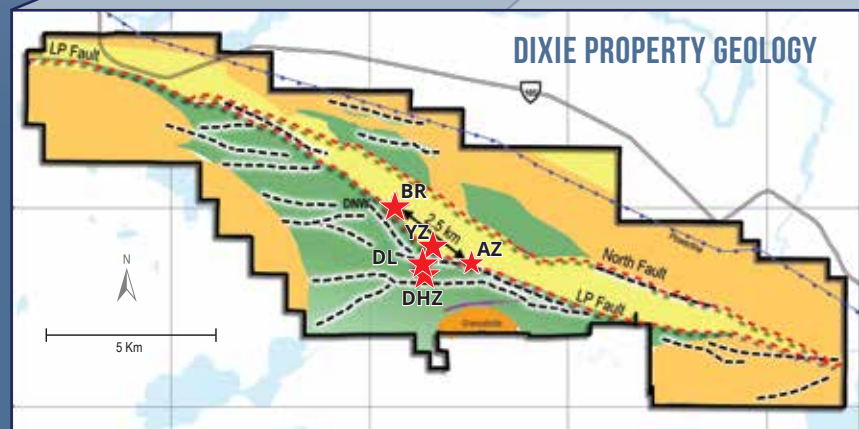
#### MOST RECENT DISCOVERY

- 2.6km southeast of the Bear-Rimini Zone
- Hosted by the "LP Fault" – an 18km long gold-bearing deep-seated crustal structure
- Highlights include **42.00 m of 5.28 g/t gold** including **1.50 m of 101.71 g/t gold** – at 80 m depth



### YUMA ZONE-YZ

- Final metres of DC-12-07 intersected silicified volcanic rocks visibly similar to those which yielded high-grade gold at the BR discovery
- Hosted by the LP fault
- Highlights include **5.50 m of 4.07 g/t gold** beginning at 193.50 metres downhole, and **7.00 m of 11.08 g/t gold** including **2.00 m of 27.77 g/t gold**



### BEAR RIMINI ZONE-BR

- 2.5km northwest of the Hinge Zone
- Hosted by the LP fault
- 110m wide with shallow, high-grade gold in first discovery hole
- Drill highlights include **4.60 m of 30.90 g/t gold & 2.00 m of 194.21 g/t gold**



### DIXIE LIMB ZONE-DL

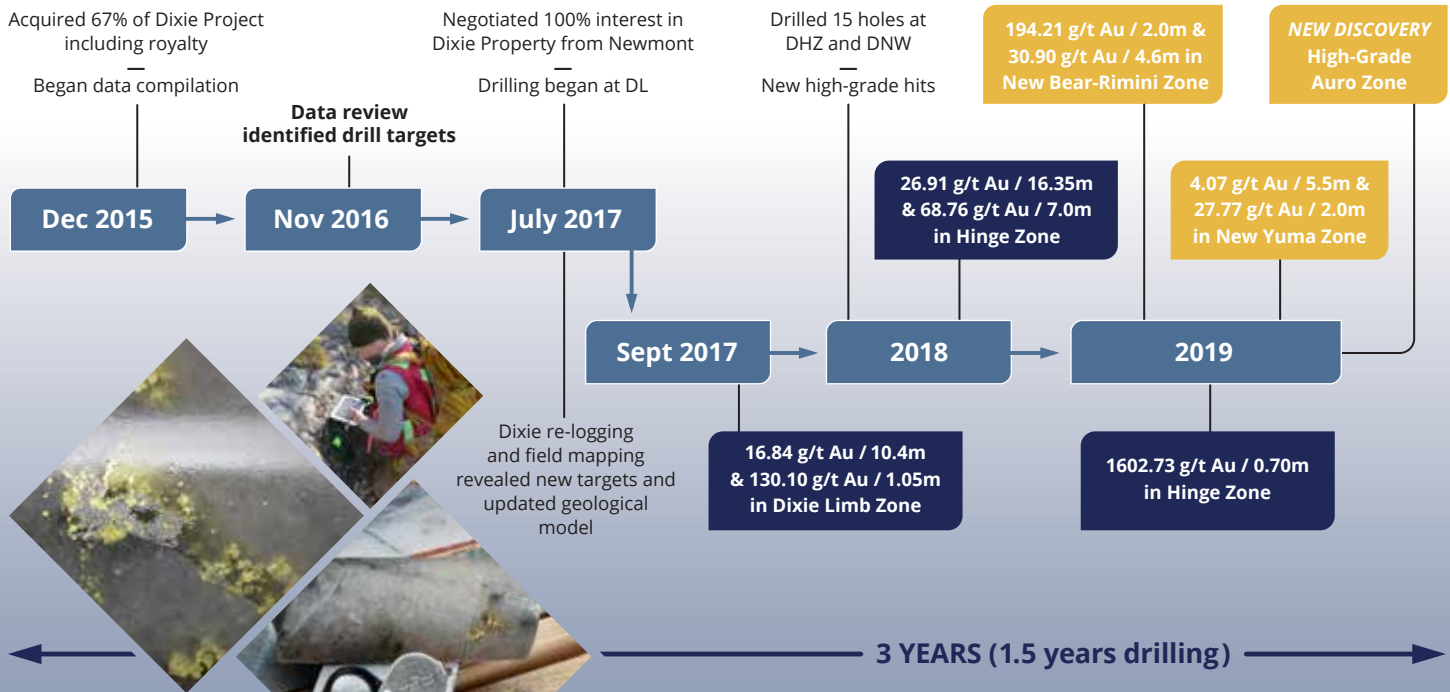
- Gold discovered over a 600m x 500m area
- 100+ drill holes all contain gold mineralization
- Significant potential host of high-grade gold, open to extension
- Drill highlights include **10.40 m of 16.84 g/t gold & 1.05 m of 130.10 g/t gold**



### HINGE ZONE-DHZ

- Multiple veins discovered within extensive gold-mineralized quartz vein network
- Part of a continuous gold vein system interpreted to extend along 600m in strike length, as drilled to-date
- Drill highlights include **0.70 m of 1602.73 g/t gold & 7.00 m of 68.76 g/t gold**

# DIXIE PROJECT TIMELINE

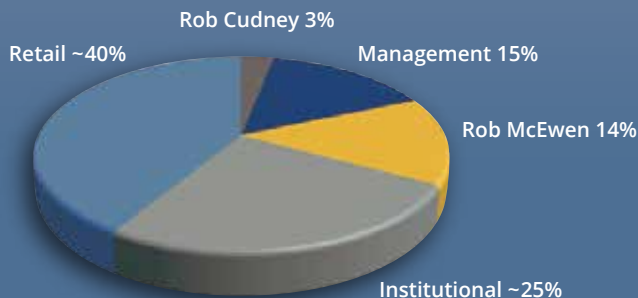


## SHARE STRUCTURE

As of September 1, 2019

Shares Outstanding	~ 43,262,000
Warrants (\$0.42 - \$1.75)	~ 4,573,000
Options	~ 3,897,000
Fully Diluted	~ 51,732,000
Cash on Hand	~ \$18,000,000

## COMPANY OWNERSHIP



## MANAGEMENT & ADVISORS

- Chris Taylor**, President, CEO & Director
- Bob Singh**, Director, VP Exploration
- Rob Scott**, Chief Financial Officer
- Andrea Diakow**, Exploration Manager
- Rita Bennett**, VP Corporate Communications
- John Robins**, Advisor
- Jim Paterson**, Advisor
- David Terry**, Director
- Doug Ramshaw**, Director
- Tony Ricci**, Director

## CONTACT US

1020-800 West Pender Street  
Vancouver, BC V6C 2V6

604 646 8354

info@greatbearresources.ca

greatbearresources.ca

**Forward Looking Statement:** Except for historical information contained herein, this document may contain forward looking statements including but not limited to comments regarding predictions and projections. Forward-looking statements address future events and conditions and therefore involve inherent risks and uncertainties. Although Great Bear Resources Ltd. (GBR) believes that such expectations are reasonable, there can be no assurance that such expectations will prove to be correct, and therefore actual results may differ materially from those currently anticipated in such statements. You are cautioned not to place undue reliance on any such forward looking statements, whether made in this document or in any question and answer period related to this document.

**Qualified Person:** Chris Taylor, P.Geo. is the Qualified Person as defined by NI 43-101 standards responsible for reviewing the technical content of this document.